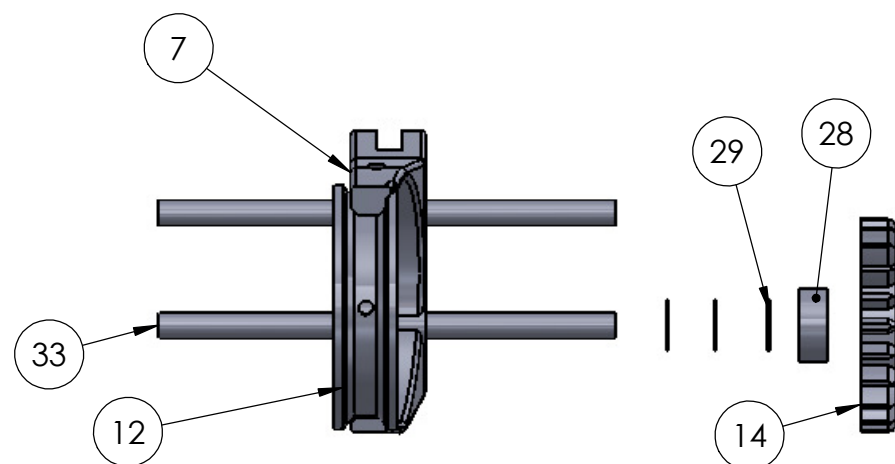
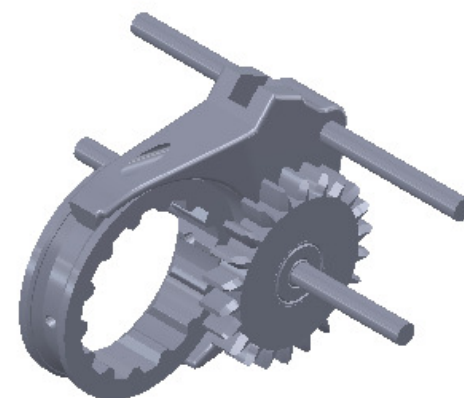


# 5th-Reverse Shift Fork Assembly



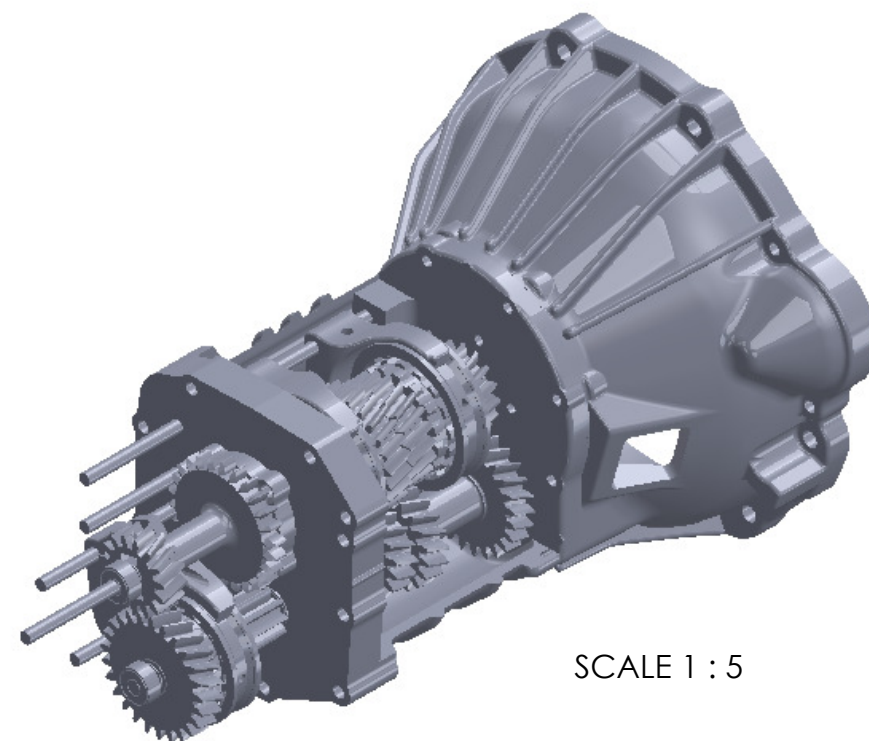
SCALE 1 : 3



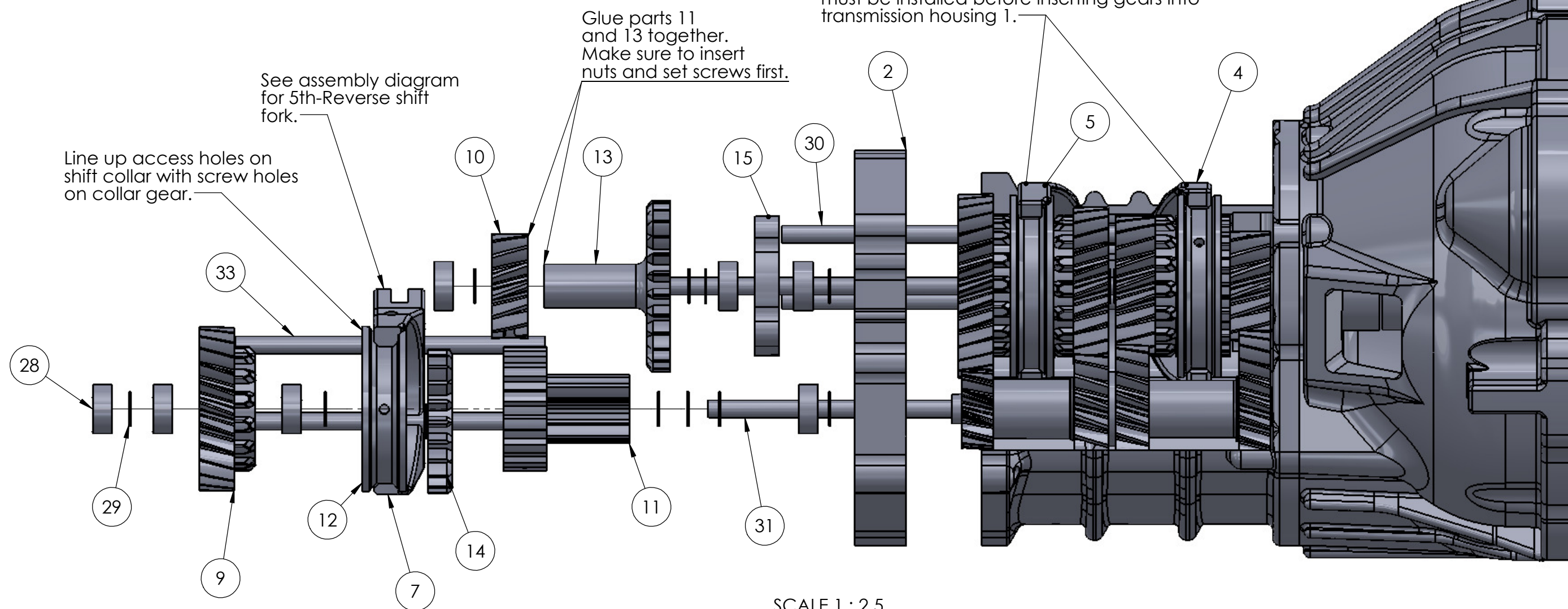
SCALE 1 : 3

Use spring or shaft collar to keep reverse idler gear against shift fork.

1-2 and 3-4 shift forks can be installed at this time if you have an allen key long enough to access the screw from the access hole in the housing. If not then they must be installed before inserting gears into transmission housing 1.



SCALE 1 : 5



SCALE 1 : 2.5